

A stylized tree with a dark brown trunk and branches, green leaves, and several orange fruits. Three blue birds are perched on the branches. The tree is located to the right of the word 'ONWARD'.

ONWARD

ROOTED AND GROUNDED IN FAITH

CAPITAL CAMPAIGN FOR
ST. ANDREW'S ELEMENTARY SCHOOL
ABILENE, KANSAS



A NOTE FROM FATHER PETER

As the Pastor at St. Andrew's, it's a blessing to help cultivate and nurture our growing families. Parents plant the seeds of faith, and our Parish family and connected community help that faith grow. That's why we are calling our Capital Campaign: ONWARD: ROOTED AND GROUNDED IN FAITH.

Our mission is to create a lasting impact through quality Catholic Education. We know a battle is raging for the hearts and minds of our kids, and that's why St. Andrew's is committed to helping form the next generation of healthy, educated, and inspired leaders for our community. We need to raise \$ 3 million over the next three years to provide our Parish and the community with a safe, upgraded, and Christ-centered environment. This is what has been referred to as the school addition project.

This capital campaign will provide us with a greater capacity to minister and serve families by expanding our school footprint. It will offer us opportunities to create and deepen faith as we see the Body of Christ at work. It will provide more significant opportunities to connect the school and Parish together through sacrificial giving.

As we press ONWARD together, we know that our proud past and promising futures are thanks to our forefathers' vision and commitment to building our church, parish hall, and school – to provide the campus we have today. Their leadership and generosity provided future members and generations a place to learn, minister, and worship.

It will take this next generation to answer the same call and plant seeds that will bear fruit for generations to come.

In Christ,

Fr. Peter O'Donnell

GREATER

CAPACITY TO MINISTER TO
AND SERVE FAMILIES

OPPORTUNITIES TO
CREATE AND DEEPEN FAITH

COMMUNITY ENGAGEMENT
THROUGH SACRIFICIAL GIVING

FAITH GROWS



SOWING SEEDS OF **FAITH** FOR OUR FUTURE

St. Andrew's Catholic Church has a rich history in Abilene. The first Mass was celebrated in 1859, two years after Abilene was founded. It became evident that this community would need a place to worship. The cornerstone for the first church was laid in 1874, and a year later, it was completed — our current church was completed forty-two years later.

1859

The first Mass celebrated in the city of Abilene, two years after the city is founded.



1916

St. Andrew's Church is built with the support of 225 families.



The desire to provide a quality education rooted in faith grew as the Parish expanded. Thanks to the dedication and generosity of the farmers, merchants, and tradesmen, who invested in our future, a vibrant Catholic Elementary school was built and dedicated in 1959.

Despite many changes over the last sixty years, our commitment to providing quality, Christ-centered education remains. **Now it's time to plant new seeds—and expand our school to continue to provide the best possible learning environment for generations to come.**

1959

St. Andrew's Elementary School is established by faithful parishioners and parents.

1984

A preschool is officially added to the building to offer option to community.

NOW



UPDATING OUR ROOTS

As a part of a long-term planning process, St. Andrew's Parish has come up with an improvement plan to meet our current and future educational needs. We are grateful to the many parents, parishioners, alumni, students, staff, community members, and others who participated.

We identified a number of urgent needs which will allow us to continue to provide the best possible learning environment.

SPECIFICS:

1

Enhanced safety features of the school by upgrading interior entry, fire alarm, and intercom system.

2

Expansion to create three new classrooms and restroom facilities.

3

More meeting rooms and break out classroom space for small groups, specialized testing, and more.

4

Develop multi-purposed music room and dedicated library space. Music room will double as a safe room.

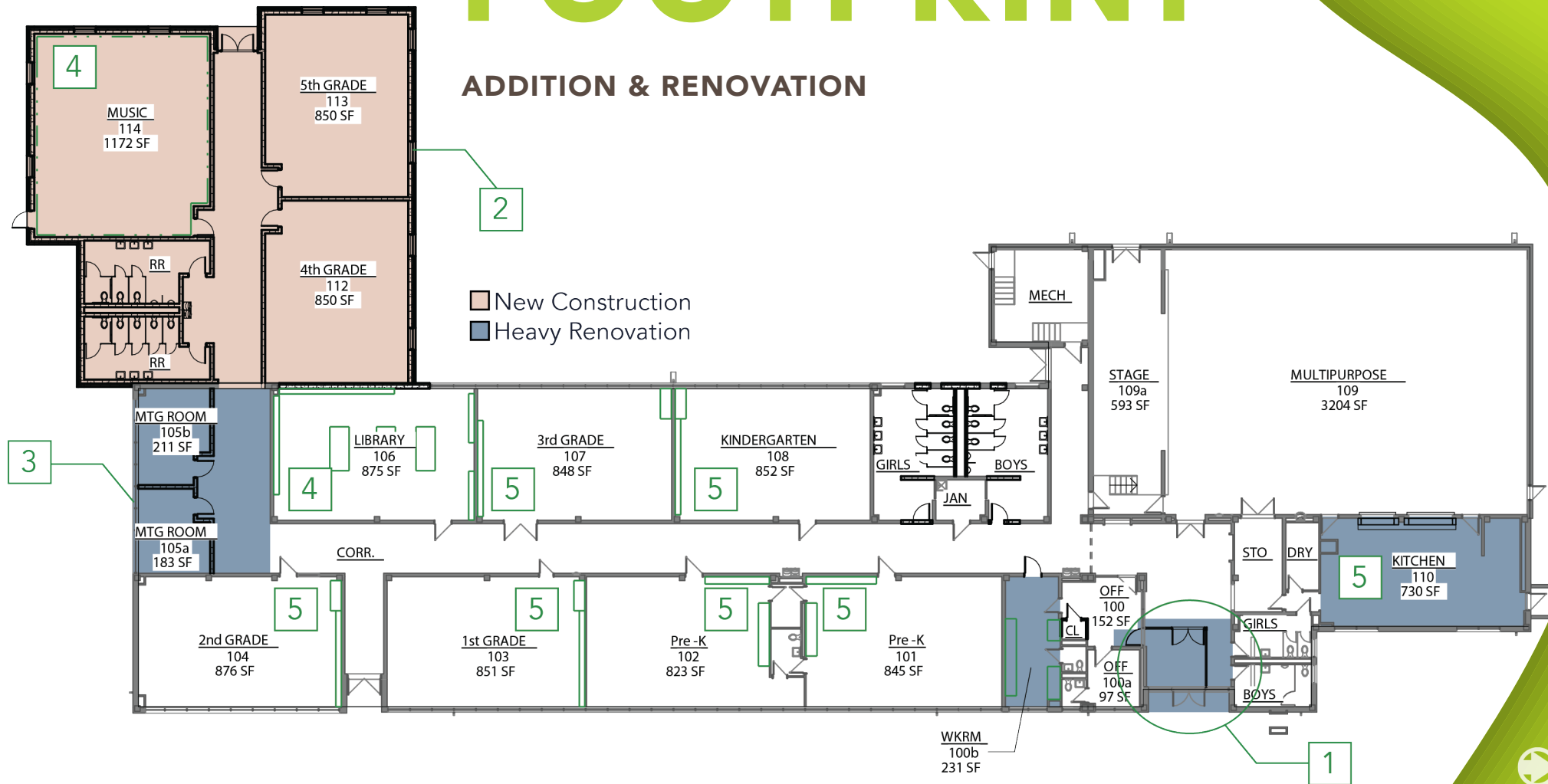
5

Improvement of existing facilities. Remodel kitchen, update lighting, and provide additional outlets for robust technology needs.



EXPANDING OUR FOOTPRINT

ADDITION & RENOVATION





LOOKING NORTHWEST



LOOKING NORTHEAST



AERIAL VIEW

PRESSING ONWARD TOGETHER

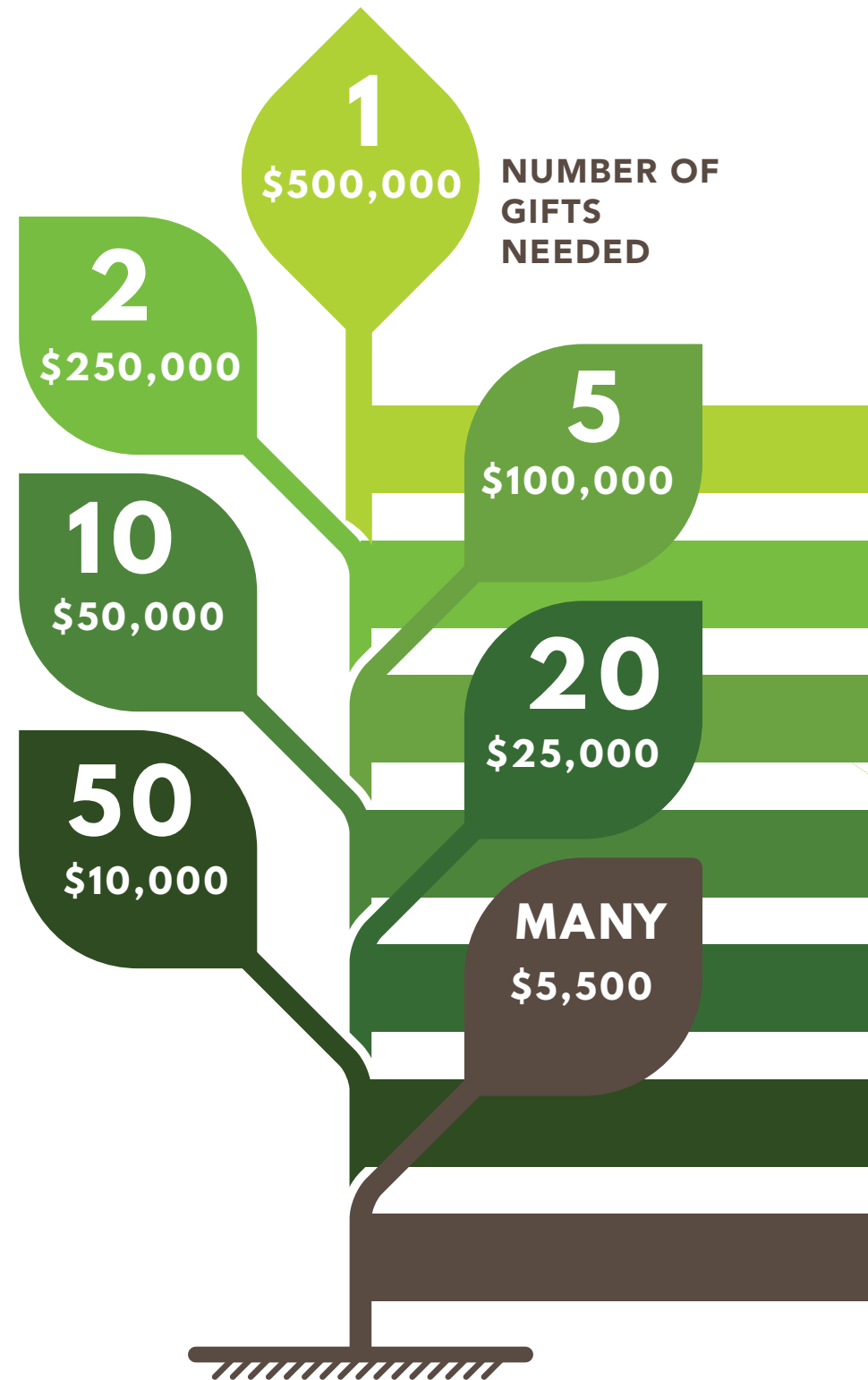
Help us achieve our goal of
\$3,000,000!

Your gifts and prayers give us a path to root the gospel in the lives of our Parish, Community, and the students St. Andrew's serves.

For the duration of three years, please prepare to give sacrificially above and beyond your regular giving to help us plant seeds of faith that will bear fruit for generations to come.

Please prayerfully consider how you and/or your family will participate in this campaign.

Biblically, we are not called to give equal gifts, but rather equal sacrifice.



HOW YOUR GIFT CAN IMPACT **OUR GOAL**

Plant your roots in Christ and let him be the foundation for your life. Be strong in your faith, just as you were taught. And be grateful.
Colossian 2:7

3-YEAR TOTAL

IMPACT EXAMPLE

1 FAMILY AT \$500,000	\$41,667 Quarterly	\$83,334 Every 6 Months	\$166,667 Annually
-----------------------	--------------------	-------------------------	--------------------

2 FAMILIES AT \$250,000	\$20,833 Quarterly	\$41,667 Every 6 Months	\$83,333 Annually
-------------------------	--------------------	-------------------------	-------------------

5 FAMILIES AT \$100,000	\$8,333 Quarterly	\$16,667 Every 6 Months	\$33,333 Annually
-------------------------	-------------------	-------------------------	-------------------

10 FAMILIES AT \$50,000	\$4,166 Quarterly	\$8,333 Every 6 Months	\$16,667 Annually
-------------------------	-------------------	------------------------	-------------------

20 FAMILIES AT \$25,000	\$2,083 Quarterly	\$4,166 Every 6 Months	\$8,333 Annually
-------------------------	-------------------	------------------------	------------------

50 FAMILIES AT \$10,000	\$833 Quarterly	\$1,667 Every 6 Months	\$3,333 Annually
-------------------------	-----------------	------------------------	------------------

MANY FAMILIES AT \$5,500	\$458 Quarterly	\$916 Every 6 Months	\$1,820 Annually
--------------------------	-----------------	----------------------	------------------

HOW CAN YOU **SUPPORT THIS** **CAMPAIGN**

WITH YOUR PRAYERS & SERVICE

Join us by praying for St. Andrew's Community that we be people who are Rooted and Grounded in Faith. Volunteer at functions to help with their success.

YOUR LEADERSHIP

Attend events and help inspire the community to support this capital campaign. Or join our team to help ensure the Onward campaign is a success.

RESOURCES & GIFTS

Complete your pledge card and let us know how you're going to support the Onward campaign.



SCAN ME

St. Andrew's Catholic Church

311 S. Buckeye
Abilene, KS 67410
785-263-2453